

ORIGINAL ARTICLE

Assessing pre- and post-zygotic barriers between North Atlantic eels (*Anguilla anguilla* and *A. rostrata*)MW Jacobsen^{1,5}, L Smedegaard^{1,5}, SR Sørensen², JM Pujolar¹, P Munk², B Jónsson³, E Magnussen⁴ and MM Hansen¹

Elucidating barriers to gene flow is important for understanding the dynamics of speciation. Here we investigate pre- and post-zygotic mechanisms acting between the two hybridizing species of Atlantic eels: *Anguilla anguilla* and *A. rostrata*. Temporally varying hybridization was examined by analyzing 85 species-diagnostic single-nucleotide polymorphisms (SNPs; $F_{ST} \geq 0.95$) in eel larvae sampled in the spawning region in the Sargasso Sea in 2007 ($N=92$) and 2014 ($N=460$). We further investigated whether genotypes at these SNPs were nonrandomly distributed in post-F1 hybrids, indicating selection. Finally, we sequenced the mitochondrial *ATP6* and nuclear *ATP5c1* genes in 19 hybrids, identified using SNP and restriction site associated DNA (RAD) sequencing data, to test a previously proposed hypothesis of cytonuclear incompatibility leading to adenosine triphosphate (ATP) synthase dysfunction and selection against hybrids. No F1 hybrids but only later backcrosses were observed in the Sargasso Sea in 2007 and 2014. This suggests that interbreeding between the two species only occurs in some years, possibly controlled by environmental conditions at the spawning grounds, or that interbreeding has diminished through time as a result of a declining number of spawners. Moreover, potential selection was found at the nuclear and the cytonuclear levels. Nonetheless, one glass eel individual showed a mismatch, involving an American *ATP6* haplotype and European *ATP5c1* alleles. This contradicted the presence of cytonuclear incompatibility but may be explained by that (1) cytonuclear incompatibility is incomplete, (2) selection acts at a later life stage or (3) other genes are important for protein function. In total, the study demonstrates the utility of genomic data when examining pre- and post-zygotic barriers in natural hybrids. *Heredity* (2017) **118**, 266–275; doi:10.1038/hdy.2016.96; published online 9 November 2016

INTRODUCTION

Elucidating the different types of pre- or post-zygotic reproductive isolating barriers is crucial for understanding speciation (Ramsey *et al.*, 2003; Coyne and Orr 2004; Nosil *et al.*, 2005; Rieseberg and Willis, 2007; Lowry *et al.*, 2008). Prezygotic mechanisms impede mating through, for example, habitat, temporal or sexual isolation, or mechanical isolation because of genitalic incompatibility (Nosil *et al.*, 2005; Lessios, 2011). On the other hand, postzygotic selection acts after the zygote has been formed because of reduced fitness of hybrids that may eventually lead to reinforcement and speciation. Here a distinction is made between extrinsic and intrinsic postzygotic barriers (Mayr, 1963; Nosil *et al.*, 2005; Seehausen *et al.*, 2014). In extrinsic postzygotic isolation, hybrid phenotypes are maladapted to the environment relative to parental phenotypes (Nosil *et al.*, 2005; Schluter, 2009). Intrinsic postzygotic barriers involve genetic incompatibility when suboptimal allelic combinations are brought together in hybrids. Deleterious combinations will lead to reduced fitness or infertility, as demonstrated both theoretically (Gavrilets, 2003, 2004; Coyne and Orr, 2004) and empirically (Brideau *et al.*, 2006; Presgraves, 2007; Maheshwari and Barbash, 2011). A special case, the so-called cytonuclear incompatibility, involves mitochondrial and nuclear genes (Burton *et al.*, 2013). Genes from both genomes interact

within protein complexes of the oxidative phosphorylation pathway that is responsible for energy (adenosine triphosphate (ATP)) production (Saraste 1999; Ballard and Whitlock, 2004). Thus, coadaptation within populations or species may result in mismatches and protein dysfunction in hybrids leading to reduced fitness (Burton *et al.*, 2013). Evidence for such mismatches has been shown in several organisms, including flies (Meiklejohn *et al.*, 2013), copepods (Ellison and Burton, 2006) and monkey flowers (Fishman and Willis 2006). Nonetheless, the absence of coevolution is not always deleterious. For example, a recent study of the redbelly dace (*Chrosomus eos*) showed that introgression of a foreign mitogenome, of up to 10 Myr of independent evolution, is not necessarily deleterious but may rather have beneficial effects (Deremiens *et al.*, 2015). In total, few good cases of cytonuclear incompatibility exist outside the laboratory and more empirical evidence is needed to understand the significance of this mechanism in speciation (Burton *et al.*, 2013).

Here we investigate pre- and post-zygotic barriers between the two sister species of North Atlantic eels: European (*Anguilla anguilla*) and American eel (*A. rostrata*) (Tesch, 2003). Both species are panmictic (Als *et al.*, 2011; Côté *et al.*, 2013), show high effective population sizes (Côté *et al.*, 2013; Pujolar *et al.*, 2013; Jacobsen *et al.*, 2014b) and spawn in the thermal fronts of the southern Sargasso Sea (McCleave

¹Department of Bioscience, Aarhus University, Aarhus, Denmark; ²National Institute of Aquatic Resources, Charlottenlund, Denmark; ³Northwest Iceland Nature Research Centre, Saudárkrökur, Iceland and ⁴Faculty of Science and Technology, University of the Faroe Islands, Torshavn, Faroe Islands

Correspondence: Dr MW Jacobsen, Department of Bioscience, Aarhus University, Ny Munkegade 114, DK-8000 Aarhus C, Denmark. E-mail magnus.jacobsen@bios.au.dk

⁵These authors contributed equally to this work.

Received 14 April 2016; revised 13 August 2016; accepted 22 August 2016; published online 9 November 2016

et al., 1987; Tesch, 2003). Their spawning shows extensive overlap in space (Schmidt, 1923; Tesch, 2003; Munk *et al.*, 2010) and time, with peak spawning time in February–April for American and March–June for European eel (McCleave *et al.*, 1987; Tesch, 2003; Miller *et al.*, 2015). After spawning, the larvae (leptocephali) are transported by ocean currents back to their respective feeding grounds (Schmidt, 1923), where they enter fresh or brackish water as glass eels. After a period of 4–20 years as yellow eels, they metamorphose into silver eels that migrate back to the Sargasso Sea to spawn and subsequently die (Tesch, 2003). The spawning and larval migrations are highly differentiated in Atlantic eels with a spawning migration of ~5000 km for European eel and 2500 km for American eel (Aoyama, 2009) and a subsequent duration of larval phases of ~2 years and 7–9 months (Tesch, 2003), respectively, although this is still debated (Tesch, 2003; Zenimoto *et al.*, 2011).

Mitogenome sequencing suggests that species divergence of Atlantic eels was initiated ~3.3 million years ago (Myr) (Jacobsen *et al.*, 2014b). However, gene flow still occurs, as hybrids have been reported in several studies (Avisé *et al.*, 1990; Albert *et al.*, 2006; Gagnaire *et al.*, 2009; Pujolar *et al.*, 2014a, b). Thus, although temporal and spatial separation at the spawning grounds likely constitutes prezygotic barriers, they are not absolute. Nonetheless, the frequency of hybridization is unknown and, to date, no F1 hybrids have been found in the Sargasso Sea, where merely two second-generation backcrosses previously have been detected based on 86 species-diagnostic ($F_{ST} \geq 0.95$) single-nucleotide polymorphisms (SNPs) in samples from 2007 (Pujolar *et al.*, 2014a). The finding of only backcross individuals but no F1 hybrids may be explained by temporally varying hybridization (Pujolar *et al.*, 2014a). This could result from differences in temporal overlap of spawning time between the species across years, potentially mediated by annual differences in the location of the thermal fronts that are highly dynamic across years (Tesch, 2003; Ullman *et al.*, 2007).

F1 hybrids have only been observed in Iceland (Avisé *et al.*, 1990; Albert *et al.*, 2006; Pujolar *et al.*, 2014a). This is possibly a consequence of an intermediate larval migration behavior, where F1 hybrids either actively or passively get transported to Iceland, approximately located longitudinally intermediate between North America and Europe (Avisé *et al.*, 1990; Pujolar *et al.*, 2014a). In continental Europe and North America, only few later-generation backcrosses have been observed (Albert *et al.*, 2006; Pujolar *et al.*, 2014b), suggesting strong postzygotic barriers. One such barrier has been proposed to be cytonuclear incompatibility (Gagnaire *et al.*, 2012), based on the finding of significant inter-species nonsynonymous differentiation in genes involved in the ATP synthase complex (Gagnaire *et al.*, 2012). This protein complex is part of the oxidative phosphorylation chain and catalyzes the synthesis of ATP from adenosine diphosphate (Saraste, 1999). The two genes showing highest nonsynonymous differentiation in Atlantic eels are the mitochondrial *ATP6* (*ATP synthase F0 subunit 6*) and the nuclear *ATP5c1* (*ATP synthase F1 subunit gamma*) genes. Thus, coevolution likely has occurred between these genes and mismatches in hybrids are expected to be associated with postzygotic selection. Such selection may be linked to the possibility of completing the migratory loop; either the spawning migration or the subsequent larval phase. Both life-history traits may be associated with energetics and are significantly correlated with amino acid changes in *ATP6* in freshwater eels (Anguillidae) (Jacobsen *et al.*, 2015). Although European eel can be reared *in vitro* through the preleptocephali stage (Sørensen *et al.*, 2016), the same is not yet possible for the American eel and none of them can presently be reared artificially. Thus, hybrids can only be studied from wild-caught

specimens (Tesch, 2003). Here recent studies based on restriction site associated DNA (RAD) sequencing (Pujolar *et al.*, 2014b) and analysis of a subset of species-diagnostic SNPs (Pujolar *et al.*, 2014a) have detected hybrids from beyond the F1 generation backcross level. Screening for unusual *ATP6–ATP5c1* combinations in such hybrids can be used for investigating the possibility of cytonuclear incompatibility in Atlantic eels (Blier *et al.*, 2001; Gagnaire *et al.*, 2012).

The use of species-diagnostic SNPs to detect hybrids may, however, involve potential problems. Genome-wide differentiation between American and European eel is highly heterogeneous with an average F_{ST} of 0.041. Nevertheless, thousands of SNPs show fixed differences and are candidates for being under divergent selection between the species (Jacobsen *et al.*, 2014a). Hence, it is likely that selection acts on these loci in hybrids. As such, whereas F1 hybrids should be heterozygous for all diagnostic loci, selection and coadaptation may distort genotype frequencies in post-F1 hybrids, leading to increased inaccuracy in estimating numbers of generations since initial hybridization.

Here we addressed the following questions. (1) Is the degree of hybridization temporally varying in the Sargasso Sea? (2) Does selection affect diagnostic SNPs and thereby categorization of post-F1 hybrids? (3) Are *ATP6–ATP5c1* combinations in post-F1 hybrids in accordance with the hypothesis of cytonuclear incompatibility partly underlying postzygotic barriers between the species? Using a panel of 96 near-diagnostic SNPs (Pujolar *et al.*, 2014a) we analyzed eel larvae sampled in the Sargasso Sea in 2014 ($N=460$), in addition to new samples from Morocco ($N=21$) and the Faroe Islands ($N=30$). Data were used for assessing temporal variation in hybridization and selection in combination with previously published data, in particular from larvae collected in the Sargasso Sea in 2007 ($N=92$) and Icelandic eels collected in the early 2000s ($N=159$). We expected that F1 hybrids should be overrepresented compared with backcrosses at the spawning grounds because of postzygotic barriers, in case of continuous gene flow between the species. Furthermore, we sequenced the *ATP6* and *ATP5c1* genes from 19 hybrids in order to test for species-specific *ATP6–ATP5c1* matches and thus indirectly for cytonuclear incompatibility. These hybrids were identified in the present and previous studies (Jacobsen *et al.*, 2014a; Pujolar *et al.*, 2014a, b) by analyzing species-diagnostic SNPs using STRUCTURE (Pritchard *et al.*, 2000; Falush *et al.*, 2003, 2007) and NEWHYBRIDS (Anderson and Thompson, 2002). Overall, our study provides new insights into the pre- and post-zygotic barriers involved in speciation in the case of North Atlantic eels in particular, and speciation in the oceans in general.

MATERIALS AND METHODS

Identifying species and hybrids among eel larvae from the Sargasso Sea

A total of 472 candidate *Anguilla* sp. larvae (leptocephali), sampled in the Sargasso Sea from 18 March to 15 April 2014, were analyzed in this study. They represent 47 different localities along 7 transects at longitude: 68.5°W, 65.5°W, 62.7°W, 59.5°W, 57.0°W, 53.5°W and 50°W (Figures 1 and 2a) and cover the main part of the spawning ground shared by the two species that historically has been ranging from ca. 70 to 58°W (Miller *et al.*, 2015). A single sampling station at longitude 51.8°W was also included. Sampling was conducted using a ring net (diameter: 3.5 m, length: 25 m and mesh size of 560 µm). Larvae were stored in separate eppendorf tubes in either ethanol (96%) or RNAlater. In addition, new samples also included glass eels collected in Morocco (Oved Sebou; $N=21$) and yellow eels collected in the Faroe Islands (Streymnes; $N=15$ and Miðvágur; $N=15$) in 2011 (Figure 1 and Table 1).

DNA was extracted using E.Z.N.A. purifications columns (OMEGA Bio-Tek, Norcross, GA, USA). Species identification was based on PCR of the

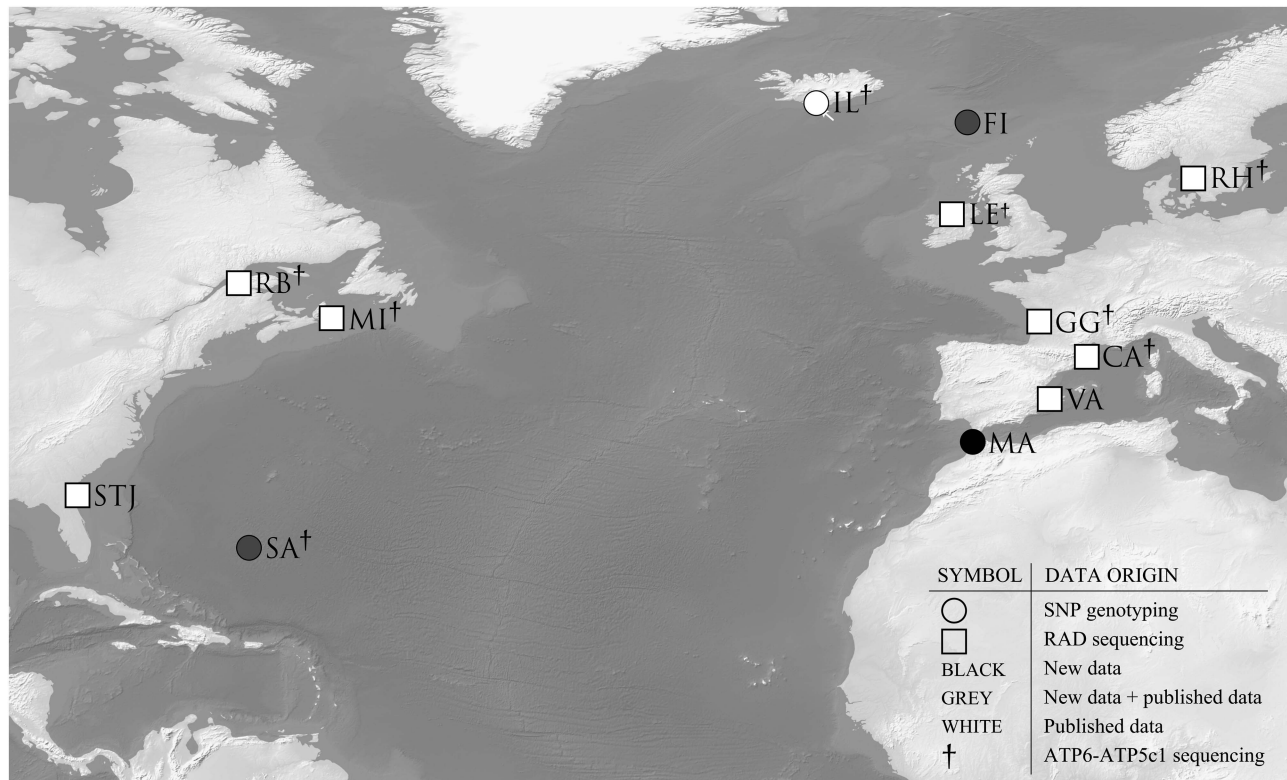


Figure 1 Map showing all localities of new and previously published data analyzed in this study. Black circles denote localities with new data; gray circles denote localities with both new and already published data and white squares show localities with only data already published. See Table 1 for information on exact sampling location and sample size.

mitochondrial *cytochrome b* gene (*CytB*) according to Trautner (2006). A total of 96 species-diagnostic SNPs ($F_{ST} \geq 0.95$) developed by Pujolar *et al.* (2014a) based on RAD sequencing were then genotyped on 96.96 Dynamic Arrays (Fluidigm Corporation, San Francisco, CA, USA) using the Fluidigm EP1 instrumentation according to the manufacturer's recommendations. In addition, genotype data from Pujolar *et al.* (2014a), who analyzed 280 European eels for the same 96 SNPs, were reanalyzed in the study. These data consisted of eel larvae collected in the Sargasso Sea ($N=92$) in 2007 (caught between 70 and 64°W), yellow and glass eels collected in Iceland ($N=159$) in 2000–2003 and yellow eels collected in the Faroe Islands ($N=29$) in 2011 (for details on exact sampling localities see Pujolar *et al.*, 2014a). In total, the data set encompassed 803 individuals (Figure 1 and Table 1).

All individuals were analyzed using NEWHYBRIDS (Anderson and Thompson, 2002). No prior information on the origin of individuals was used and an assignment threshold of >0.95 was applied. The software assigns individuals to different hybrid classes by calculating the probability of the individual belonging to a specific hybrid category. In this study we used the same hybrid categories as in Pujolar *et al.* (2014a): pure European eel (AA), pure American eel (AR), first-generation hybrids $AA \times AR$ (F1), $F1 \times F1$ (F2), $AA \times F1$ (bAA), $AR \times F1$ (bAR), $bAA \times AA$, $bAA \times AR$, $bAR \times AR$, $bAR \times AA$, $bAA \times F1$ and $bAR \times F1$. This means that, for example, $bAR \times AA$ is an individual resulting from a pure European eel (AA) mating with a hybrid backcross (bAR) that again is the result of a pure American eel (AR) mating with an F1 hybrid.

Seven hybrids were assigned to the 'unusual' $bAR \times AA$ class and showed seven loci that were homozygous in all individuals for the European eel allele. As this is unlikely to happen by chance, and may indicate selection, we examined these loci further. First, we calculated the probability of observing the homozygote genotype in all seven individuals. Assuming Hardy–Weinberg proportions we first estimated genotype frequencies in American and European eel based on the allele frequencies observed in each of the seven biallelic loci. Subsequently, we used these frequencies to estimate genotype frequencies in F1

hybrids, backcrosses to American eel (bAR) and $bAR \times AA$ hybrids and finally the individual probabilities (see Supplementary Notes S1 and S2). Second, the positions of all SNPs were matched to the predicted complementary DNA annotation file of the European eel draft genome (Henkel *et al.*, 2012) (<http://www.zfgenomics.com/sub/eel>). This allowed us to investigate: (1) whether SNPs were located within genes (introns+exons) or in noncoding regions; and (2) the possible function of the genes in which those SNPs were located. We were particularly interested in testing whether these genes matched the Gene Ontology (GO) terms 'development' and 'phosphorylation' as the recent study of Jacobsen *et al.* (2014a) showed these two GO term groups to be overrepresented in F_{ST} outlier SNPs between European and American eel.

Cytoneuclear incompatibility in hybrids

A total of 19 hybrid individuals were analyzed for the mitochondrial *ATP6* and interacting nuclear *ATP5c1* genes (Table 2). These individuals corresponded to all previously analyzed hybrid individuals from which DNA or tissue was still available. The individuals belonged to samples genotyped based on either the Fluidigm 96.96 Dynamic Arrays ($N=12$) (Pujolar *et al.*, 2014a; this study) or RAD sequencing ($N=7$) (Pujolar *et al.*, 2014b). The seven RAD sequenced individuals from Pujolar *et al.* (2014b) were previously analyzed using STRUCTURE and the 'gensback' (G) option. This option allows testing whether an individual has an immigrant ancestor in the last G generations (Pritchard *et al.*, 2000; Falush *et al.*, 2003, 2007). However, the study by Pujolar *et al.* (2014b) only used a G of five (corresponding to the fourth-generation backcross category), and thus some individuals potentially having an older immigrant ancestor may have been wrongly assigned. As erroneous hybrid assignment may bias the assessment of possible cytonuclear selection, we reanalyzed the data using a G option of 9 (corresponding to the eighth-generation backcross category) and furthermore evaluated assignment power in STRUCTURE. This is described in detail in Supplementary Note S3.

Both the mitochondrial *ATP6* gene that contains five species-diagnostic nonsynonymous changes and the part of the nuclear interactor *ATP5c1* that

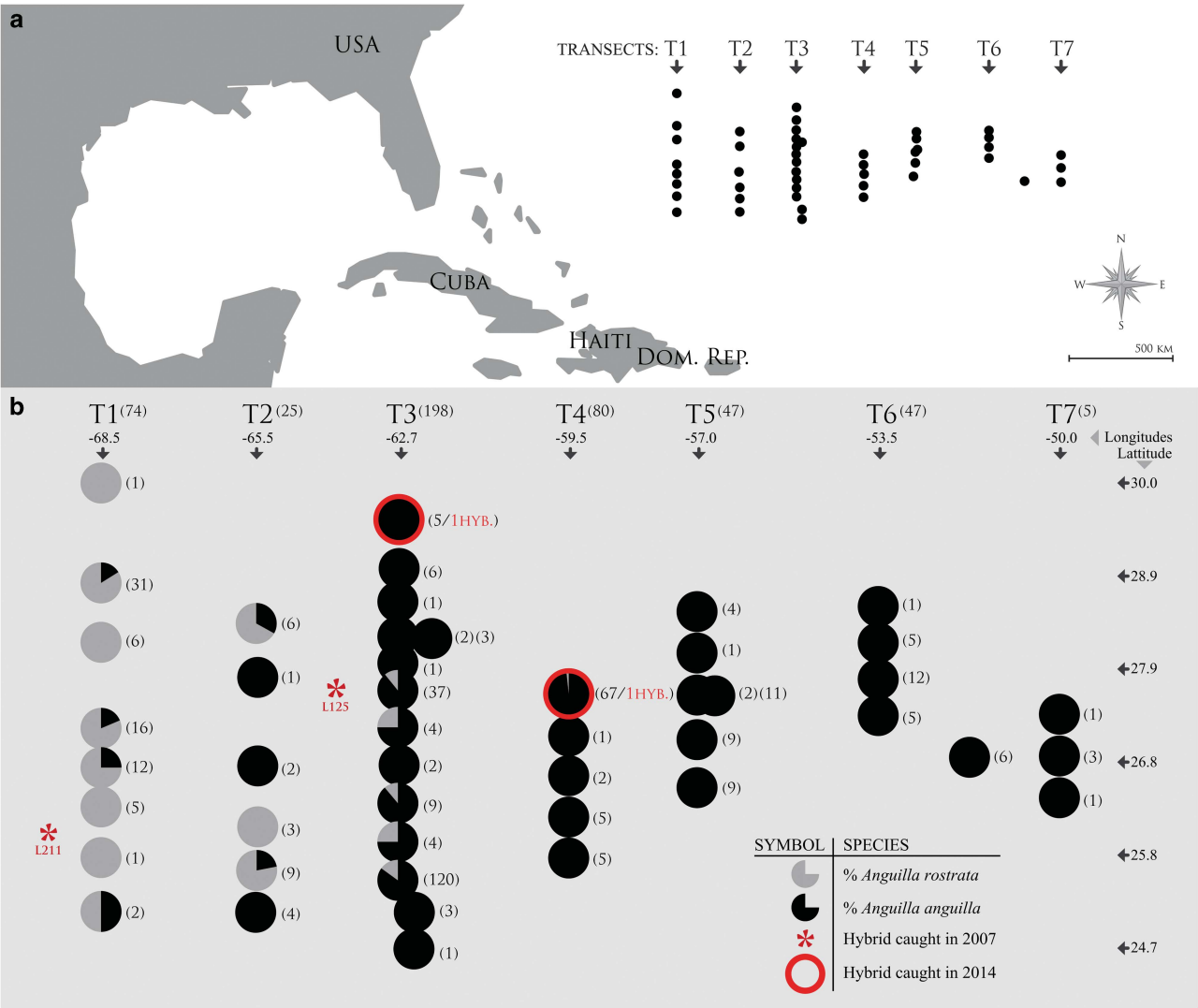


Figure 2 Maps showing (a) sampling localities of the leptocephali larvae caught during the 2014 expedition and genotyped in this study, and (b) the frequencies of the two species at each of the localities sampled during the 2014 expedition. The two red circles denote the localities from which hybrids (BAR×AA) were detected in 2014 and red asterisks show the positions of two hybrids found among larvae sampled in 2007. The numbers in brackets denote sample sizes of analyzed larvae for each locality.

covers two quasi-diagnostic nonsynonymous SNPs positioned in the seventh exon were sequenced. Primers developed by Gagnaire *et al.* (2012) were used (Supplementary Table S1). PCR was performed in 20 µl reactions containing 10 µl RedTaq mix (SIGMA-ALDRICH, Brøndby, Denmark), 0.25 mM of each primer and 50–100 ng of DNA. The amplification parameters were: 94 °C for 5 min, followed by 38 cycles (94 °C for 30 s, 60 °C for 30 s, 72 °C for 45 s) and finally 5 min at 72 °C. Sequencing was conducted using the commercial service provided by Macrogen (Amsterdam, Holland). The forward primers Ang-ATP6-L and ATP-ATP5c1-6L were used for sequencing. Sequence identity was assessed using BLAST (Altschul *et al.*, 1997) (<http://blast.ncbi.nlm.nih.gov>) for the *ATP6* gene and by evaluating the genotypes at the two quasi-diagnostic SNPs for *ATP5c1* gene.

For all analyzed hybrids, the probability of obtaining the observed *ATP5c1* genotypes was calculated based on the assigned hybrid classes, and the observed species-specific allele frequencies of *ATP5c1* from Gagnaire *et al.* (2012) (American = 1/120 and European eel = 76/0 (the numbers correspond to the frequency of European and American alleles observed in each species)). Hardy–Weinberg proportions were assumed. The subsequent *P*-values were used to infer deviations from neutral expectations and in combination with the mitogenome data used to assess possible cytonuclear incompatibility.

RESULTS
Species distribution in the Sargasso Sea and identification of hybrids

Species identification of the eel larvae collected in 2014, based on the mitochondrial *cytochrome b* gene, revealed a higher proportion of American than European eel in the two westernmost transects (Figures 2a and b). The frequency of European eel increased in the eastward direction and reached 100% for the four easternmost transects (Figure 2b). At transects 1–4, larvae from both species were found, indicating some spatial overlap of spawning grounds. Among 460 larvae, 358 showed the European eel *CYTB* gene, whereas 102 showed the American eel *CYTB* gene. The difference in the number of European and American eel caught is to some extent related to sampling, as the easternmost localities sampled are expected to be dominated by European eel. A qualitatively similar distribution of species in the Sargasso Sea was observed in 2007 (Munk *et al.*, 2010), although the hybrid larvae were caught slightly more westwards in 2007 (Figure 2b).

Table 1 Overview over sampling localities, sample sizes and sequencing approaches of new and reanalyzed data

| Locality | Country | Codes | Year | Sample sizes | | Life stage | Sequencing approach |
|------------------------------|------------------|-------|-----------|------------------|----------------|------------|---------------------|
| | | | | New data | Published data | | |
| Oved Sebou | Morocco | MA | 2011 | 21 | — | G | SNP genotyping |
| Faroe Islands | Faroe Islands | FI | 2011 | 30 | 29 | Y | SNP genotyping |
| Sargasso Sea | — | SA | 2014/2007 | 460 ^a | 92 | L | SNP genotyping |
| Iceland | Iceland | IL | 2000–2003 | — | 96/63 | G/Y | SNP genotyping |
| Lough Erne ^b | Northern Ireland | LE | 2008 | — | 7 | G | RAD sequencing |
| Canet ^b | France | CA | 2008 | — | 2 | G | RAD sequencing |
| Valencia ^b | Spain | VA | 2008 | — | 7 | G | RAD sequencing |
| Ringhals ^b | Sweden | RH | 2008 | — | 8 | G | RAD sequencing |
| Gironde ^b | France | GG | 2008 | — | 1 | G | RAD sequencing |
| St. John river ^b | USA | STJ | 1999 | — | 2 | Y | RAD sequencing |
| Mira River ^b | Canada | MI | 2007 | — | 8 | G | RAD sequencing |
| Riviere Blanche ^b | Canada | RB | 2007 | — | 5/7 | G/Y | RAD sequencing |

Abbreviations: G, glass eel; Y, yellow eel; L, larvae (leptocephalus); SNP genotyping, Fluidigm single-nucleotide polymorphism genotyping; RAD, restriction site associated DNA.

^aInitially, 472 analyzed individuals but somewhere discarded because of data quality (see results).

^bRAD sequenced individuals used for hybrid assessment and power analysis in STRUCTURE (Supplementary Note S3).

Table 2 Results of *ATP6* and *ATP5c1* sequencing from the 19 hybrid samples

| Individual | Information on individuals | | | Country | Information on estimated hybrid classes | | Sequencing results | |
|------------|----------------------------|------------|------|---------------|---|-------------------|--------------------|---------------|
| | Location | Life stage | Year | | Hybrid class ^a | Validation method | ATP6 | ATP5c1 |
| SteinI | Steinsmyrarfjot | Y | 2000 | Iceland | F1 | SNP genotyping | AA | Heterozygote |
| Vogsl9 | Vogslaekur | G | 2001 | Iceland | F1 | SNP genotyping | AA | Heterozygote |
| VogslII | Vogslaekur | G | 2001 | Iceland | F1 | SNP genotyping | AA | Heterozygote |
| Vifil2 | Vifilsstadvatn | G | 2002 | Iceland | F1 | SNP genotyping | AR | Heterozygote |
| STG3 | Stokkseyri | G | 2001 | Iceland | F1 | SNP genotyping | AA | Heterozygote |
| SSG7 | Seljar | G | 2001 | Iceland | F1 | SNP genotyping | AA | Heterozygote |
| SSG10 | Seljar | G | 2001 | Iceland | F1 | SNP genotyping | AA | Heterozygote |
| Vogsl5 | Vogslaekur | G | 2001 | Iceland | bAR × AA | SNP genotyping | AA | Homozygote AA |
| Vifil5 | Vifilsstadvatn | Y | 2002 | Iceland | bAR × AA | SNP genotyping | AA | Heterozygote |
| STG2 | Stokkseyri | G | 2001 | Iceland | bAR × AA | SNP genotyping | AA | Heterozygote |
| L211 | Sargasso Sea | L | 2007 | — | bAR × AA | SNP genotyping | AA | Homozygote AA |
| 40-450-L2 | Sargasso Sea | L | 2014 | — | bAR × AA | SNP genotyping | AA | Homozygote AA |
| NEG3 | Mira River | G | 2007 | Canada | Third-generation backcross AR | RAD sequencing | AR | Homozygote AR |
| GG14 | Gironde | G | 2008 | France | Fourth-generation backcross AA | RAD sequencing | AA | Homozygote AA |
| RH24 | Ringhals | G | 2008 | Sweden | Fourth-generation backcross AA | RAD sequencing | AA | Homozygote AA |
| Cag25 | Canet | G | 2008 | France | Fifth-generation backcross AA | RAD sequencing | AA | Homozygote AA |
| Cag117 | Canet | G | 2008 | France | Fifth-generation backcross AA | RAD sequencing | AA | Homozygote AA |
| RBG10 | Riviere Blanche | G | 2007 | Canada | Later or equal to sixth-generation backcross AR | RAD sequencing | AA | Heterozygote |
| LEG29 | Lough Erne | G | 2008 | North Ireland | Later or equal to sixth-generation backcross AA | RAD sequencing | AR | Homozygote AA |

Abbreviations: AA, European eel (*Anguilla anguilla*); AR, American eel (*Anguilla rostrata*); *ATP6*, mitochondrial; *ATP5c1*, nuclear; G, glass eel; Y, yellow eel; L, larvae (leptocephalus); SNP genotyping, Fluidigm single-nucleotide polymorphism genotyping; RAD, restriction site associated DNA.

The presented hybrid classes are the ones estimated in this study (see Materials and methods and Supplementary Notes S3 and S4).

^aThe 'bAR × AA' category denotes a second-generation backcross; the result of a mating between a backcrossed male American individual (F1 × AR) and a female European eel (AA).

Of the 96 SNPs genotyped on the Fluidigm array, 11 showed either no variation or had high levels of missing data across individuals and were omitted from subsequent analyses. The final SNP data set encompassed 85 species-diagnostic SNPs. A total of 12 larvae showed a high proportion of missing data and were omitted from all further analyses. Five of these represented larvae of other deep sea (non-*Anguilla*) eel species spawning in the Sargasso Sea, as further validated by sequencing the mitochondrial 16S rRNA gene using the L1854 and

H3059 primers (Aoyama *et al.*, 2000) Supplementary Table S2). A total of 460 eel larvae from 2014 were analyzed.

Among the 460 larvae sampled in 2014, a total of 2 individuals were identified as hybrids. Both showed the European eel mitochondrial genotype (Figure 2b). Using NEWHYBRIDS, the two hybrids were classified as second-generation backcrosses (bAR × AA) between a first-generation backcross (American eel × F1 hybrid) male and a pure European eel female. This hybrid class was the same, as for the two

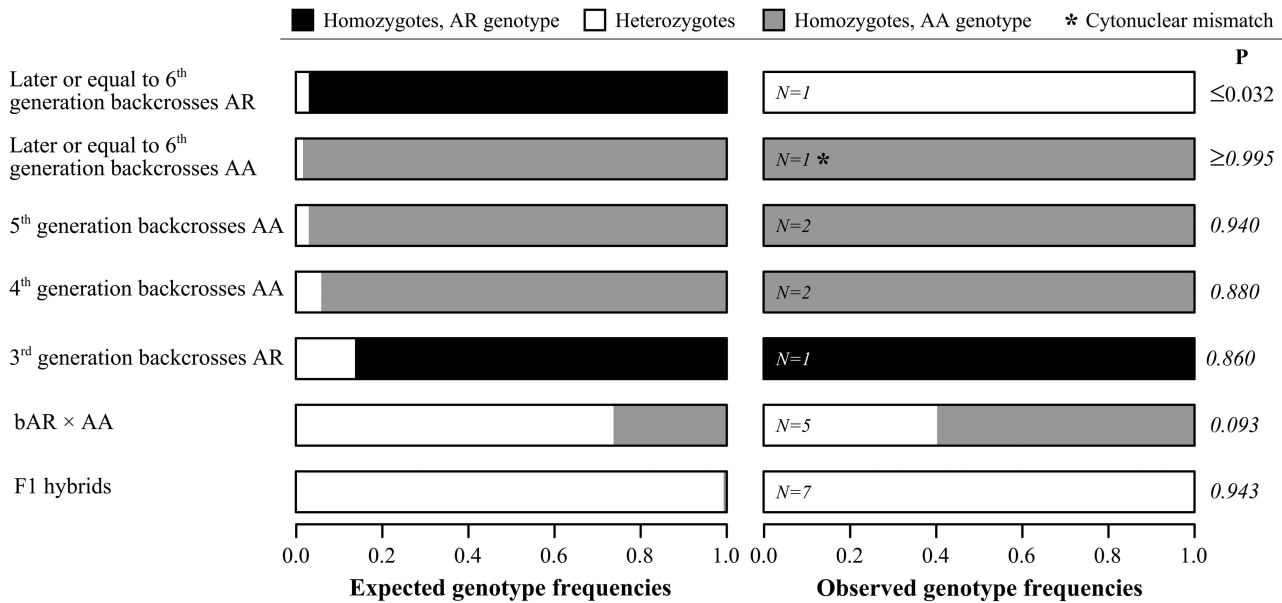


Figure 3 Expected and observed genotype frequencies at *ATP5c1* of the examined hybrids, given the estimated hybrid classes. The estimated expected frequencies are based on assumed Hardy–Weinberg proportions and previously reported allele frequencies of the *ATP5c1* gene in American eel (Gagnaire *et al.*, 2012). The probabilities of the observed genotype combinations are shown to the right and the individual showing *ATP6–ATP5c1* mismatch is denoted by an asterisk. Sample sizes (*N*) are shown in the respective histograms. AA, European eel (*A. Anguilla*); AR, American eel (*A. rostrata*).

Table 3 Allele frequencies of the seven candidate loci for selection and estimated genotype frequencies in bAR × AA hybrids

| Locus name | Allele frequencies AA | | Allele frequencies AR | | Expected genotype frequencies in bAR × AA hybrids | | | Estimated probability for 7 individuals being AA |
|------------|-----------------------|-----------|-----------------------|-----------|---|---------------|----------------|--|
| | AR allele | AA allele | AR allele | AA allele | AA homozygotes | Heterozygotes | AR homozygotes | |
| AD272530 | 0 | 1 | 0.995 | 0.005 | 0.2538 | 0.7463 | 0 | $[0.2538]^7 = 6.77 \times 10^{-5}$ |
| AD50216 | 0 | 1 | 0.995 | 0.005 | 0.2538 | 0.7463 | 0 | $[0.2538]^7 = 6.77 \times 10^{-5}$ |
| AC195199 | 0.028 | 0.972 | 1 | 0 | 0.2366 | 0.7438 | 0.0212 | $[0.2366]^7 = 4.15 \times 10^{-5}$ |
| AA69202 | 0 | 1 | 1 | 0 | 0.2500 | 0.7500 | 0 | $[0.2500]^7 = 6.10 \times 10^{-5}$ |
| AA99082 | 0 | 1 | 0.971 | 0.029 | 0.2718 | 0.7283 | 0 | $[0.2718]^7 = 1.09 \times 10^{-4}$ |
| AD148173 | 0.078 | 0.922 | 0.962 | 0.038 | 0.2403 | 0.7044 | 0.0556 | $[0.2403]^7 = 4.63 \times 10^{-5}$ |
| AC82954 | 0.009 | 0.991 | 0.986 | 0.014 | 0.2559 | 0.7372 | 0.0066 | $[0.2559]^7 = 7.19 \times 10^{-5}$ |

Abbreviations: AA, European eel (*Anguilla anguilla*); AR, American eel (*Anguilla rostrata*).

Calculations of the probabilities for all seven individuals being homozygotes for the European allele (AA homozygotes) are shown in the rightmost column. For all calculations see Supplementary Notes S1 and S2.

hybrid larvae sampled in 2007 (sample L125 and L211, Figure 2b) (Pujolar *et al.*, 2014a), that were also reanalyzed in this study. No hybrids were found among the new samples analyzed from Morocco or the Faroe Islands. The percentage of bAR × AA hybrids in the Sargasso Sea was lower in the 2014 sample compared with 2007: 0.43% (2/460) vs 2.17% (2/92). This was also the case when only using the more abundant European eel samples: 0.56% (2/358) vs 4.08% (2/49). However, in both cases the difference was not significant (Fisher's exact test; $P = 0.077$ and $P = 0.136$).

Among the reanalyzed Icelandic hybrids, 13 were classified as F1 hybrids, 1 as bAA and 3 as bAR × AA, as previously found by Pujolar *et al.* (2014a) analyzing the same individuals. Further analyses of the 7 bAR × AA hybrids (3 from Iceland and 4 from the Sargasso Sea) showed that at 7 of the analyzed 85 loci, all individuals were homozygous for the European eel-specific allele (see Supplementary Table S5). The probability that all 7 individuals are homozygous at the same locus is between 1.09×10^{-4} and 4.15×10^{-5} depending on the

locus (Table 3, see Supplementary Notes S1 and S2 for specific details about the calculations) and therefore highly unlikely to occur by chance. Six out of seven of these SNPs were located inside annotated genes. Among these genes, four included GO terms related to development, and one gene related to phosphorylation (Supplementary Table S3). The frequency associated with different types of gene categories was higher among the seven SNPs but did not differ significantly compared with the rest of the analyzed SNPs (Supplementary Table S4).

Assessment of cytonuclear selection and incompatibility

Out of the 19 hybrids analyzed, 7 were assigned to the F1 hybrid category, 5 to the second-generation backcross category (bAR × AA) and 7 to the third-generation backcross category or later (Table 2). Estimation of hybrid classes for the RAD sequenced individuals is described in detail in Supplementary Note S3. Out of all hybrids, 3 had American and 16 had European mitochondrial DNA *ATP6*

haplotypes. Observed genotypes at the nuclear *ATP5c1* gene overall followed neutral expectations given the estimated hybrid classes (Figure 3). However, one individual inferred to be a sixth generation or later American backcross (in the following denoted ≥ 6 th) (RBG10 Table 2 and Figure 3) showed an introgressed European mitogenome and was heterozygote at *ATP5c1* (see Supplementary Note S4 and Supplementary Tables S11 and S12 for the calculations of the probabilities). Calculation of the probability for one individual of being an *ATP5c1* heterozygote in the sixth or later generation American backcross level is low, with an estimated probability of ≤ 0.032 (Figure 3). Overall, all individuals showed a match between mitochondrial and nuclear genotype with one exception: one individual sampled in Europe (LEG29; Table 2) showed a complete mismatch between the *ATP6* and *ATP5c1* genotypes. This individual was inferred to be a ≥ 6 th-generation European backcross and was homozygous for the European *ATP5c1* genotype but showed an American *ATP6* haplotype (Figure 3).

DISCUSSION

Temporally varying hybridization in North Atlantic eels

One interesting finding in our study is the lack of first-generation (F1) hybrids found in the Sargasso Sea in 2014 despite the large number of eel larvae analyzed ($N=460$). This is in accordance with the study of Pujolar *et al.* (2014a) and Als *et al.* (2011), who also reported no F1 hybrids in the Sargasso Sea in 2007, although relying on smaller sample sizes ($N=92$ and 388). Surprisingly, only bAR \times AA hybrids were observed in the Sargasso Sea in both 2007 and 2014. Although the frequency of these hybrids decreased from 2007 to 2014, the differences were not significant and the result does not in itself favor temporally varying hybridization. Nonetheless, although F1 hybrids of Atlantic eel may show an increase in fitness, the so-called hybrid vigor (see, for example, Templeton, 1986; Johnson *et al.*, 2010), post-F1 hybrids are likely to be selected against because of extrinsic selection, or intrinsic selection because of, for example, genetic incompatibilities. Indeed, the presence of strong postzygotic barriers seems supported in Atlantic eels that, despite low average genetic differentiation, show many diagnostic and near-diagnostic SNPs distributed across the genome (Jacobsen *et al.*, 2014a). The results in this study also support a postzygotic component of selection in hybrids, as 7 of the analyzed 85 loci showed strong evidence for selection for the European eel-specific allele. More direct support for postzygotic selection can be found in Iceland. Here both amplified fragment length polymorphism- and SNP-based studies of glass and yellow eels report more than twofold higher frequencies of F1 hybrids compared with combined first and second backcrosses (Albert *et al.*, 2006; Pujolar *et al.*, 2014a). Besides being the only place where F1 hybrids have been found, Iceland is also the only locality where first- (bAA) and second-generation backcrosses (bAR \times AA) have been detected outside the Sargasso Sea. Although this may be because of differences in hybrid frequencies between Iceland and Continental Europe and North America, there is currently no evidence for this. In fact, out of several studies investigating hybridization in Atlantic eels from the mainland (excl. Iceland) using microsatellite (Als *et al.*, 2011: $N=1010$), amplified fragment length polymorphism (Albert *et al.*, 2006: $N=379$) or SNP markers (Pujolar *et al.*, 2014a, b: $N=310$), none have observed any such individuals. Given these observations, we find it likely that F1 hybrids should exist in higher frequency compared with later-generation backcrosses if hybridization is continuous over time. As such, we find that the apparent lack of F1 hybrids in the Sargasso Sea in 2007 and 2014 is surprising and best explained by temporally varying hybridization.

Temporally varying hybridization may be mediated by differences in temporal or spatial overlap of spawning between the species over time. This could be a result of annual variation in the location of the thermal fronts (Pujolar *et al.*, 2014a) that show considerable differences in intensity and geographical position across years (Tesch, 2003; Ullman *et al.*, 2007; Munk *et al.*, 2010). Indeed, temperature has increased steadily over the past decades in the Sargasso Sea (Bonhommeau *et al.*, 2008; Huffard *et al.*, 2014), where the 22.5 °C isotherm moreover has moved northwards since ~1970 (Friedland *et al.*, 2007). As the 22.5 °C isotherm is generally considered to be near the northern limit of spawning of Atlantic eels (Kleckner and McCleave 1988; Tesch and Wegner, 1990), these changes are likely to be associated with a more northern displacement of the shared spawning grounds. As such, the distances that American and European eel need to cover to reach the Sargasso Sea may have changed recently, potentially affecting time of arrival and hybridization, resulting in fewer hybrids being produced. Temporally varying hybridization has also been suggested by Albert *et al.* (2006) to explain the decrease in proportion of hybrids observed in Iceland from 2000 to 2003 when comparing glass eel samples, a pattern that was further supported when comparing different cohorts comprising glass eels and yellow eels. Year-to-year variation in population density could also explain the lack of F1 hybrids in our study. In this sense, both European and American eel have experienced drastic declines in the past ca. 30 years (Åström and Dekker, 2007), possibly linked to inland pollution, dams and fisheries (Busch and Braun, 2014; Laporte *et al.*, 2016). This decline suggests possible reduced densities of spawning eels that could lead to a reduced spatial overlap and hybridization (Albert *et al.*, 2006; Jacobsen *et al.*, 2014b). As environmental change within the Sargasso Sea itself may affect eel population sizes (Friedland *et al.*, 2007; Bonhommeau *et al.*, 2008), these two scenarios may not be mutually exclusive and the lack of hybrids could be a consequence of different environmental effects.

Sampling bias in either space or time may also explain the lack of F1 hybrids in our study. However, although a distinct hybrid zone in theory could go unnoticed, there is little evidence for this. If it did indeed exist, it would be expected to be present in the core area of the two overlapping spawning areas that historically has been ranging from 70 to 58°W (Miller *et al.*, 2015), and that was extensively sampled during expeditions in both 2007 and 2014 (Als *et al.*, 2011; Pujolar *et al.*, 2014a; this study: Figure 2). Another possibility is that hybridization occurs as a last option, when individuals are unable to locate conspecifics. If so, F1 hybrids should be the product of either European eels arriving too early or American eel arriving too late at the spawning area, or when both species arrive outside the primary spawning season. A recent analysis of all published records of larvae (<10 mm) collected in the Sargasso Sea suggests that the spawning season extends from 13 February to 27 April in American eel and 27 February to 21 July in European eel, with rare spawning events possibly occurring outside these periods (Miller *et al.*, 2015). Thus, given that sampling took place from March to April during the 2007 and 2014 expeditions to the Sargasso Sea, a temporal sampling bias cannot be ruled out. A way of investigating this possibility would be to analyze more samples from Iceland that so far is the only place where F1 hybrids have been observed (Avisé *et al.*, 1990; Albert *et al.*, 2006; Gagnaire *et al.*, 2009; Pujolar *et al.*, 2014a). If the apparent lack of F1 hybrids in 2007 and 2014 is true, then this pattern should also be reflected for the same cohorts in Iceland.

Selection at loci in natural hybrids

Identification of hybrids was based on a set of SNPs that showed almost fixed differences between the two species and are likely to mark chromosomal regions under divergent selection in Atlantic eels (Jacobsen *et al.*, 2014a; Pujolar *et al.*, 2014a). The use of genetic markers under selection enhance the ability to determine the population of origin of individuals within species (Nielsen *et al.*, 2012) and detect post-F1 hybrids (Pujolar *et al.*, 2014a). However, it may also involve potential problems when used for hybrid assignment by affecting the genotypic proportions that hybrid identification is based on. Even if near fixation of different alleles in the two species reflects selection, it does not infer whether selection is weak or strong. In fact, even weak directional selection may lead to fixation given sufficient time and low genetic drift and gene flow. Specifically in our study, all putative second-generation bAR \times AA backcrosses were homozygous for the European eel allele at the same 7 SNPs (out of 85 SNP loci). This observation is highly unlikely to happen by chance (Table 3) and strongly suggests a role of selection. We find the most parsimonious explanation to be that the seven SNPs are linked, or part of, to functional alleles that are codominant and subject to strong selection between the species. This could result in all genotypes being homozygous, whereas at the same time the genotypes at other loci are more in accordance with neutral expectations, given the specific crosses underlying the hybrids. However, although this may explain the specific genotypes at these loci, omission of the loci would not cause the hybrids to be assigned to a less complex hybrid class than bAR \times AA, such as, for example, first-generation AA backcross (F1 \times AA). Nonetheless, it demonstrates the potential pitfalls when using such markers in hybrid assessment and suggests an increasing bias when attempting to identify hybrids several generations back in time.

Further investigation of the genomic positions of the 7 SNPs supports that selection is playing a role as (1) 6 out of the 7 SNPs were located in genes (as opposed to being randomly located in noncoding regions) and (2) 4 genes matched GO terms related to development and one gene matched GO terms related to phosphorylation/energy production. This is in concordance with the recent study of Jacobsen *et al.* (2014a) investigating speciation in North Atlantic eels, in which those two GO term categories were overrepresented among genes associated with candidate SNPs for differential selection showing $F_{ST} = 1$ when comparing European and American eel samples.

Cytonuclear incompatibility in North Atlantic eels

The cytonuclear incompatibility hypothesis states that there needs to be a match between coadapted interacting nuclear and mitochondrial genes that might otherwise lead to protein malfunction and consequently reduced fitness (Blier *et al.*, 2001). Results from our study are overall in accordance with this hypothesis as hybrid individuals generally showed a match between the putatively coadapted species-specific nuclear and mitochondrial alleles. However, in most cases the observed *ATP5c1* genotypes, found within each hybrid category, followed neutral expectations and do thus neither support nor contradict the cytonuclear hypothesis. Interestingly, however, one American glass eel backcross (RBG10; Table 2 and Figure 3) sampled in Riviere Blanche was heterozygous for the nuclear *ATP5c1* gene, but showed an introgressed European mitochondrial DNA *ATP6* gene. Considering that this individual was estimated to belong to a ≥ 6 th-generation backcross, the probability of being heterozygous at *ATP5c1* is low ($P \leq 0.032$, Figure 3). This points toward selection for a match between corresponding *ATP6* haplotypes and *ATP5c1* alleles and thus supports the hypothesis of cytonuclear incompatibility.

On the other hand, one glass eel collected in Ireland and identified as a ≥ 6 th-generation European backcross (LEG29; Table 2 and Figure 3) represented a complete mismatch, as it showed the American mitochondrial haplotype but was homozygous for the European nuclear allele. This demonstrates that the combination of an American *ATP6* haplotype and two European *ATP5c1* alleles is not immediately lethal, and this is in opposition to the expectations of cytonuclear incompatibility. This can potentially be explained if incompatibility is incomplete. In such a case, individuals showing mismatch could be viable, although fitness is reduced. Nonetheless, with only one individual in clear favor and only one that contradicts the expected pattern of mitonuclear incompatibility, this possibility cannot be verified and the hypothesis of cytonuclear incompatibility cannot be fully accepted or rejected based on the results in this study.

Nonetheless, the finding of an *ATP6*–*ATP5c1* mismatch is surprising, as the finding of significant interspecies nonsynonymous differentiation in genes involved in the ATP synthase complex (Gagnaire *et al.*, 2012), in combination with studies showing strong evidence for positive selection within *ATP6* (Jacobsen *et al.*, 2014b, 2015), is difficult to explain without cytonuclear incompatibility. However, three explanations may account for the finding of a complete *ATP6*–*ATP5c1* mismatch even in case of complete cytonuclear incompatibility: (1) cytonuclear selection might first act in a later life stage beyond the glass eel stage, (2) compensatory interactions involving other nuclear subunits of the ATP synthase protein complex might occur or (3) unidirectional incompatibility. Given the function of the ATP synthase complex, *ATP6*–*ATP5c1* mismatch is expected to lead to reduced energy production (Saraste, 1999). However, it is possible that compensatory mechanisms exist early in life. For example, *Drosophila* mutants show metabolic compensation through increased glycolytic flux, ketogenesis and Krebs' cycle activity despite *ATP6* dysfunction, although severely deleterious phenotypes are already observed after few days and mutants die prematurely (Celotto *et al.*, 2011). If a similar mechanism acts in Atlantic eels, *ATP6*–*ATP5c1* mismatch may be observed in juvenile individuals, whereas selection may act against this genetic combination later in life. Compensatory mechanisms may also exist, involving other nuclear subunits. In addition to *ATP5c1*, 13 other nuclear genes are involved in the ATP synthase protein complex (Ballard and Whitlock, 2004). Although transcriptome analysis has shown that *ATP5c1* is the most divergent subunit in terms of diagnostic nonsynonymous substitutions between European and American eels, diagnostic changes also exist in at least four other subunits (Gagnaire *et al.*, 2012). Thus, ATP synthase function and hence postzygotic selection may depend on the genotypes of these subunits in combination with *ATP5c1*. A last possibility is that cytonuclear incompatibility is unidirectional in Atlantic eels, with *ATP6*–*ATP5c1* mismatch being fatal in American eel, but not in European eel. This could potentially explain the observed asymmetrical patterns of introgression, from American to European eel, reported in some studies (Gagnaire *et al.*, 2009; Wielgoss *et al.*, 2014). On the other hand, if unidirectional cytonuclear incompatibility occurred we would expect introgression of the American mitogenome in European eel. However, little evidence of this exists. In fact, the individual sequenced in this study (LEG29) showing *ATP6*–*ATP5c1* mismatch is, to our knowledge, the only European individual to date that show the American mitogenome (see, for example, Avise *et al.*, 1990; Daemen *et al.*, 2001; Jacobsen *et al.*, 2014b) besides F1 hybrids from Iceland (Avise *et al.*, 1990; Albert *et al.*, 2006; this study). As such, we find the possibility of unidirectional cytonuclear incompatibility unlikely.

CONCLUSION

In conclusion, our results provide new insights into the pre- and post-zygotic barriers acting between the two species of Atlantic eels. The lack of F1 hybrids, but presence of a few later-generation hybrids in the Sargasso Sea in both 2007 and 2014, suggests that interbreeding between the two species is restricted to some years, whereas in other years only backcrosses occur that are the result of interbreeding in past generations. We find the most likely explanation to be interannual variation in the location of the thermal fronts in which spawning takes place that may subsequently lead to increased or decreased overlap of spawning time of the two species. Moreover, overrepresentation of homozygotes for some SNPs used for hybrid assessment was observed that we interpret as divergent selection between species being particularly strong at some loci. On one side, this provides evidence for postzygotic barriers, but on the other side complicates accurate identification of post-F1 hybrid classes. Finally, we find some evidence supporting the suggestion of cytonuclear incompatibility involving the mitochondrial *ATP6* gene and the nuclear *ATP5c1* interactor gene (Gagnaire *et al.*, 2012), but mismatches between the two are not necessarily lethal and the result should be interpreted with precautions until more data are available. The results obtained in this study are not only important for understanding speciation in Atlantic eels, but also for understanding the variety of isolating barriers acting in nature (Coyne and Orr, 2004; Nosil *et al.*, 2005) and especially in the marine environment (Puebla, 2009). Here, organisms like many fishes and invertebrates show several traits in common with Atlantic eels: they are difficult to rear in captivity, show large population sizes, have no obvious geographic barriers to gene flow and show long larval phases (Palumbi, 1994). All these features promote low genetic drift, efficiency of even low selection and increasing possibilities for speciation with gene flow (Palumbi, 1994; Riginos and Victor, 2001; Jacobsen *et al.*, 2014a). Thus, both the difficulties in studying these organisms and the overall evolutionary forces involved in their speciation may be quite similar to the situation in Atlantic eels.

DATA ARCHIVING

The sequence data are deposited in Genbank accessions numbers KX818059–KX818096. The FLUIDIGM SNP and the RAD SNP data sets are deposited in DRYAD: DOI:10.5061/dryad.v5m24.

CONFLICT OF INTEREST

The authors declare no conflict of interest.

ACKNOWLEDGEMENTS

We acknowledge funding from the Carlsberg Foundation (Grant 2012_01_0272), the Danish Centre for Marine Research, the Danish Council for Independent Research, Natural Sciences (Grants 09-072120 and 1323-00158A to MMH) and EU Interreg (Øresund-Kattegat-Skagerrak) funds (MARGEN). We thank Henrik Sparholt, Peter Rask Møller, Jon Svendsen, Magnus Bohr, Daniel Jiro Ayala and Cornelia Jaspers for assistance with sorting of samples during an expedition to the Sargasso Sea in 2014, Annie Brandstrup, Karen-Lise Mensberg, Dorte Meldrup and Dorte Bekkevold for technical assistance and Louis Bernatchez for providing samples of American eels. Finally, we thank three anonymous referees for valuable comments on the manuscript.

AUTHOR CONTRIBUTIONS

MWJ, MMH, PM, LS, and JMP conceived and designed the study. LS and MWJ conducted the molecular work. MWJ, LS, MMH, SRS and JMP conducted the statistical analyses. MWJ wrote the manuscript with contributions from MMH, LS, SRS, JMP, PM, BJ and EM.

- Albert V, Jónsson B, Bernatchez L (2006). Natural hybrids in Atlantic eels (*Anguilla anguilla*, *Arostrata*): evidence for successful reproduction and fluctuating abundance in space and time. *Mol Ecol* **15**: 1903–1916.
- Als TD, Hansen MM, Maes GE, Castonguay M, Rieman L, Aarestrup K *et al.* (2011). All roads lead to home: panmixia of European eel in the Sargasso Sea. *Mol Ecol* **20**: 1333–1346.
- Altschul SF, Madden TL, Schäffer AA, Zhang Z, Miller W, Lipman DJ (1997). Gapped BLAST and PSI-BLAST: a new generation of protein database search programs. *Nucleic Acids Res* **25**: 3389–3402.
- Anderson EC, Thompson EA (2002). A model-based method for identifying species hybrids using multilocus genetic data. *Genetics* **160**: 1217–1229.
- Aoyama J (2009). Life history and evolution of migration in Catadromous eels (genus *Anguilla*). *Aqua-Biosci Monogr* **2**: 1.
- Aoyama J, Watanabe S, Nishida M, Tsukamoto K (2000). Discrimination of catadromous eels of genus *Anguilla* using polymerase chain reaction-restriction fragment length polymorphism analysis of the mitochondrial 16S ribosomal RNA domain. *Trans Am Fish Socy* **129**: 873–878.
- Åström M, Dekker W (2007). When will the eel recover? A full life-cycle model. *ICES J Mar Sci* **64**: 1491–1498.
- Avise JC, Nelson WS, Arnold J, Koehn RK, Williams GC, Thorsteinsson V (1990). The evolutionary genetic status of Icelandic eels. *Evolution* **44**: 1254–1262.
- Ballard JWO, Whitlock MC (2004). The incomplete natural history of mitochondria. *Mol Ecol* **13**: 729–744.
- Blier PU, Dufresne F, Burton RS (2001). Natural selection and the evolution of mtDNA-encoded peptides: evidence for intergenomic co-adaptation. *Trends Genet* **17**: 400–406.
- Bonhommeau S, Chassot E, Rivot E (2008). Fluctuations in European eel (*Anguilla anguilla*) recruitment resulting from environmental changes in the Sargasso Sea. *Fish Oceanogr* **17**: 32–44.
- Brideau NJ, Flores HA, Wang J *et al.* (2006). Two Dobzhansky-Muller genes interact to cause hybrid lethality in *Drosophila*. *Science* **314**: 1292–1295.
- Burton RS, Pereira RJ, Barreto FS (2013). Cytonuclear genomic interactions and hybrid breakdown. *Annu Rev Ecol Syst* **44**: 281–302.
- Busch W-DN, Braun DP (2014). A case for accelerated reestablishment of American eel in the Lake Ontario and Champlain Watersheds. *Fisheries* **39**: 298–304.
- Celotto AM, Chiu WK, Van Voorhies W, Palladino MJ (2011). Modes of metabolic compensation during mitochondrial disease using the *Drosophila* model of ATP6 dysfunction. *PLoS One* **6**: e25823.
- Côté CL, Gagnaire PA, Bourret V, Verreault G, Castonguay M, Bernatchez L (2013). Population genetics of the American eel (*Anguilla rostrata*): FST=0 and North Atlantic Oscillation effects on demographic fluctuations of a panmictic species. *Mol Ecol* **22**: 1763–1776.
- Coyne JA, Orr HA (2004). Speciation. Sinauer: Sunderland, MA, USA. pp 125–178.
- Daemen E, Cross T, Ollevier F, Volckaert F (2001). Analysis of the genetic structure of European eel (*Anguilla anguilla*) using microsatellite DNA and mtDNA markers. *Mar Biol* **139**: 755–764.
- Deremiens L, Schwartz L, Angers A, Glémet H, Angers B (2015). Interactions between nuclear genes and a foreign mitochondrial genome in the redbelly dace *Chrosomus eos*. *Comp Biochem Physiol B* **189**: 80–86.
- Ellison CK, Burton RS (2006). Disruption of mitochondrial function in interpopulation hybrids of *Tigriopus californicus*. *Evolution* **60**: 1382–1391.
- Falush D, Stephens M, Pritchard JK (2003). Inference of population structure using multilocus genotype data: linked loci and correlated allele frequencies. *Genetics* **164**: 1567–1587.
- Falush D, Stephens M, Pritchard JK (2007). Inference of population structure using multilocus genotype data: dominant markers and null alleles. *Mol Ecol Notes* **7**: 574–578.
- Fishman L, Willis JH (2006). A cytonuclear incompatibility causes anther sterility in *Mimulus* hybrids. *Evolution* **60**: 1372–1381.
- Friedland KD, Miller MJ, Knights B (2007). Oceanic changes in the Sargasso Sea and declines in recruitment of the European eel. *ICES J Mar Sci* **64**: 519–530.
- Gagnaire PA, Albert V, Jónsson B, Bernatchez L (2009). Natural selection influences AFLP intraspecific genetic variability and introgression patterns in Atlantic eels. *Mol Ecol* **18**: 1678–1691.
- Gagnaire PA, Normandeau E, Bernatchez L (2012). Comparative genomics reveals adaptive protein evolution and a possible cytonuclear incompatibility between European and American eels. *Mol Biol Evol* **29**: 2909–2919.
- Gavrilets S (2003). Perspective: Models of speciation: what have we learned in 40 years? *Evolution* **57**: 2197–2215.
- Gavrilets S (2004). *Fitness Landscapes and the Origin of Species*. Princeton University Press: Princeton, NJ.
- Henkel CV, Burgerhout E, de Wijze DL, Dirks RP, Minegishi Y, Jansen HJ *et al.* (2012). Primitive duplicate Hox clusters in the European eel's genome. *PLoS One* **7**: e32231.
- Huffard CL, von Thun S, Sherman AD, Sealey K, Smith KL (2014). Pelagic Sargassum community change over a 40-year period: temporal and spatial variability. *Mar Biol* **161**: 2735–2751.
- Jacobsen MW, Pujolar JM, Bernatchez L, Munch K, Jian J, Niu Y *et al.* (2014a). Genomic footprints of speciation in Atlantic eels (*Anguilla anguilla* and *A. rostrata*). *Mol Ecol* **23**: 4785–4798.

- Jacobsen MW, Pujolar JM, Gilbert MTP, Moreno-Mayar JV, Bernatchez L, Lobon-Cervia J *et al.* (2014b). Speciation and demographic history of Atlantic eels (*Anguilla anguilla* and *A. rostrata*) revealed by mitogenome sequencing. *Heredity* **113**: 432–442.
- Jacobsen MW, Pujolar JM, Hansen MM (2015). Relationship between amino acid changes in mitochondrial ATP6 and life history variation in Anguillid eels. *Biol Lett* **11**: pii: 20150014.
- Johnson JR, Fitzpatrick BM, Shaffer HB (2010). Admixture dynamics of tiger salamanders: fitness of early-generation hybrids and retention of low-fitness genotypes in contemporary populations. *BMC Evol Biol* **10**: 147.
- Kleckner RC, McCleave JD (1988). The northern limit of spawning by Atlantic eels (*Anguilla* spp.) in the Sargasso Sea in relation to thermal fronts and surface water masses. *J Mar Res* **46**: 647–667.
- Laporte M, Pavey SA, Rougeux C, Pierron F, Lauzent M, Budzinski H *et al.* (2016). RAD sequencing reveals within-generation polygenic selection in response to anthropogenic organic and metal contamination in North Atlantic Eels. *Mol Ecol* **25**: 219–237.
- Lessios HA (2011). Speciation genes in free-spawning marine invertebrates. *Integr Comp Biol* **51**: 456–465.
- Lowry DB, Modliszewski JL, Wright KM, Wu CA, Willis JH (2008). The strength and genetic basis of reproductive isolating barriers in flowering plants. *Philos Trans R Soc B Biol Sci* **363**: 3009–3021.
- Maheshwari S, Barbash DA (2011). The genetics of hybrid incompatibilities. *Annu Rev Genet* **45**: 331–355.
- Mayr E (1963). *Animal Species and Evolution*. Belknap: Cambridge.
- McCleave JD, Kleckner RC, Castonguay M (1987). Reproductive sympatry of American and European eels and implications for migration and taxonomy. *Am Fish Soc Symp* **1**: 286–297.
- Meiklejohn CD, Holmbeck MA, Siddiq MA, Abt DN, Rand DM, Montooth KL (2013). An incompatibility between a mitochondrial tRNA and its nuclear-encoded tRNA synthetase compromises development and fitness in *Drosophila*. *PLoS Genet* **9**: e1003238.
- Miller MJ, Bonhommeau S, Munk P, Castonguay M, Hanel R, McCleave JD (2015). A century of research on the larval distributions of the Atlantic eels: a re-examination of the data. *Biol Rev* **90**: 1035–1064.
- Munk P, Hansen MM, Maes GE, Nielsen TG, Castonguay M, Rieman L (2010). Oceanic fronts in the Sargasso Sea control the early life and drift of Atlantic eels. *Proc R Soc B Biol Sci* **277**: 3593–3599.
- Nielsen EE, Cariani A, Aoidh EM, Maes GE, Milano I, Ogden R (2012). Gene-associated markers provide tools for tackling illegal fishing and false eco-certification. *Nat Commun* **3**: 851.
- Nosil P, Vines TH, Funk DJ (2005). Perspective: Reproductive isolation caused by natural selection against immigrants from divergent habitats. *Evolution* **59**: 705–719.
- Palumbi SR (1994). Genetic-divergence, reproductive isolation, and marine speciation. *Annu Rev Ecol Syst* **25**: 547–572.
- Presgraves DC (2007). Speciation genetics: Epistasis, conflict and the origin of species. *Curr Biol* **17**: R125–R127.
- Pritchard JK, Stephens M, Donnelly P (2000). Inference of population structure using multilocus genotype data. *Genetics* **155**: 945–959.
- Puebla O (2009). Ecological speciation in marine v. freshwater fishes. *J Fish Biol* **75**: 960–996.
- Pujolar JM, Jacobsen MW, Als TD, Frydenberg J, Magnussen E, Jónsson B *et al.* (2014a). Assessing patterns of hybridization between North Atlantic eels using diagnostic single-nucleotide polymorphisms. *Heredity* **112**: 627–637.
- Pujolar JM, Jacobsen MW, Als TD, Frydenberg J, Munch K, Jónsson B *et al.* (2014b). Genome-wide single-generation signatures of local selection in the panmictic European eel. *Mol Ecol* **23**: 2514–2528.
- Pujolar JM, Jacobsen MW, Frydenberg J, Als TD, Larsen PF, Maes GE *et al.* (2013). A resource of genome-wide single-nucleotide polymorphisms generated by RAD tag sequencing in the critically endangered European eel. *Mol Ecol Resour* **13**: 706–716.
- Ramsey J, Bradshaw HD, Schemske DW (2003). Components of reproductive isolation between the monkeyflowers *Mimulus lewisii* and *M. cardinalis* (Phrymaceae). *Evolution* **57**: 1520–1534.
- Rieseberg LH, Willis JH (2007). Plant speciation. *Science* **317**: 910–914.
- Riginos C, Victor BC (2001). Larval spatial distributions and other early life-history characteristics predict genetic differentiation in eastern Pacific blennioid fishes. *Proc R Soc B Biol Sci* **268**: 1931–1936.
- Saraste M (1999). Oxidative phosphorylation at the fin de siecle. *Science* **283**: 1488–1493.
- Schluter D (2009). Evidence for ecological speciation and its alternative. *Science* **323**: 737–741.
- Schmidt J (1923). The breeding places of the eel. *Philos Trans R Soc Lond B* **211**: 179–208.
- Seehausen O, Butlin RK, Keller I, Wagner CE, Boughman JW, Hohenlohe PA *et al.* (2014). Genomics and the origin of species. *Nat Rev Genet* **15**: 176–192.
- Sørensen SR, Tomkiewicz J, Munk P, Butts IA, Nielsen A, Lauesen P, Graver C (2016). Ontogeny and growth of early life stages of captive-bred European eel. *Aquaculture* **456**: 50–61.
- Templeton AR (1986). Coadaptation and breeding depression. In: Soulé ME (ed.). *Conservation Biology: The Science of Scarcity and Diversity*. Sinauer: Sunderland. pp 105–116.
- Tesch F (2003). *The Eel*. Oxford: Blackwell Science Ltd.
- Tesch FW, Wegner G (1990). The distribution of small larvae of *Anguilla* sp. related to hydrographic conditions in 1981 between Bermuda and Puerto Rico. *Int Rev Gesamten Hydrobiol* **75**: 845–858.
- Trautner J (2006). Rapid identification of European (*Anguilla anguilla*) and North American eel (*Anguilla rostrata*) by polymerase chain reaction. *Inf Fischereiforsch* **53**: 49–51.
- Ullman DS, Cornillon PC, Shan Z (2007). On the characteristics of subtropical fronts in the North Atlantic. *J Geophys Res* **112**: C01010.
- Wielgoss S, Gilabert A, Meyer A, Wirth T (2014). Introgressive hybridization and latitudinal admixture clines in North Atlantic eels. *BMC Evol Biol* **14**: 61.
- Zenimoto K, Sasai Y, Sasaki H, Kimura S (2011). Estimation of larval duration in *Anguilla* spp., based on cohort analysis, otolith microstructure, and Lagrangian simulations. *Mar Ecol Prog Ser* **438**: 219–228.

Supplementary Information accompanies this paper on Heredity website (<http://www.nature.com/hdy>)